

ArchDaily > Projects > Visual Arts Center > France > Atelier Silhouette Urbaine > 2018 > L'Atelier des Lumières

REFURBISHMENT IN ARCHITECTURE

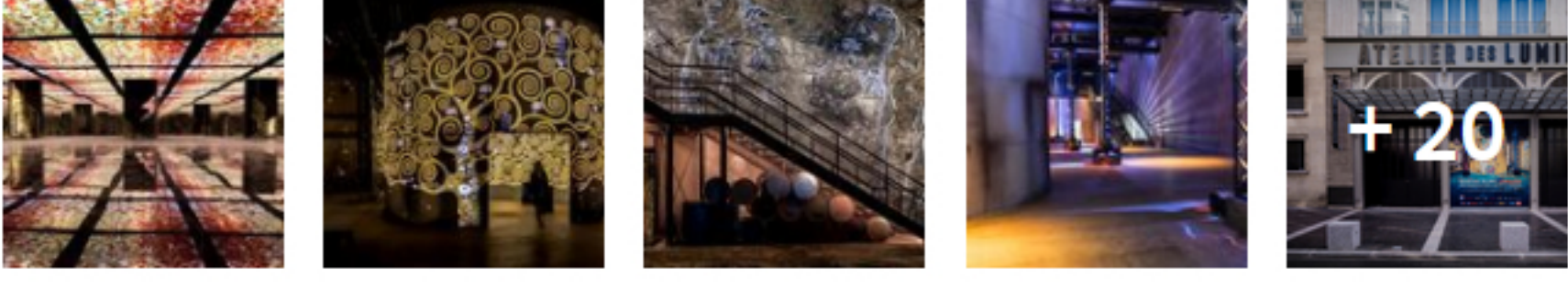
presented by the MINI Clubman

MINI

L'Atelier des Lumières / Atelier Silhouette Urbaine

f

Save this project



Curated by Clara Ott

10:00 - 15 February, 2019

ADAPTIVE REUSE · PARIS, FRANCE

- ✂

Atelier Silhouette Urbaine
- 📏

3300.0 m2
- 📅

2018
- 🏗

A2A, CARE, Colt, ENGIE, Général Métal Edition, IDS, Les Charpentiers de Paris, Schneider

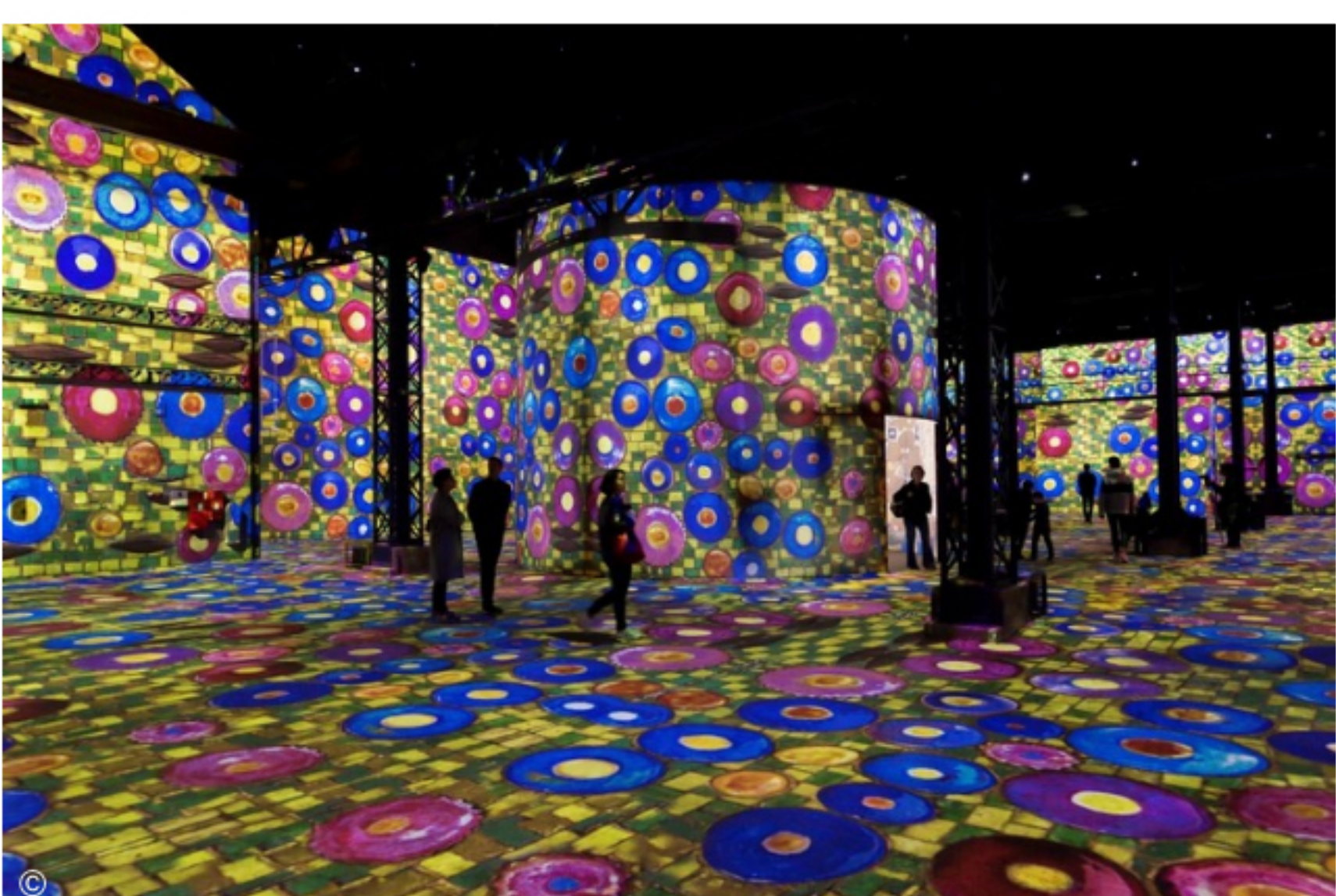
Team
CADMOS , Brizot-Masse Ingénierie, META Acoustique, Kerylos Intérieurs, CET Ingénierie

Photographs
Culturespaces

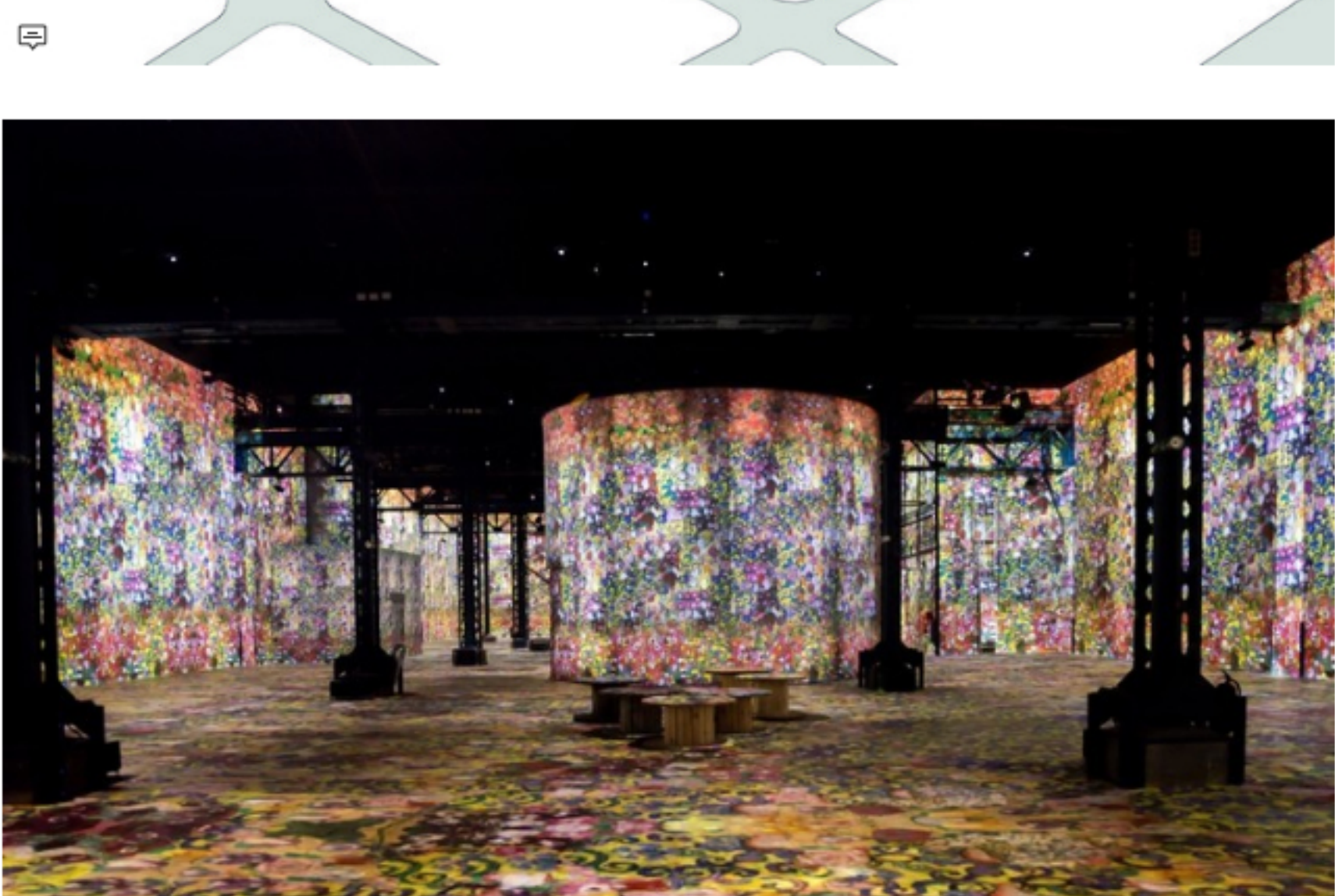
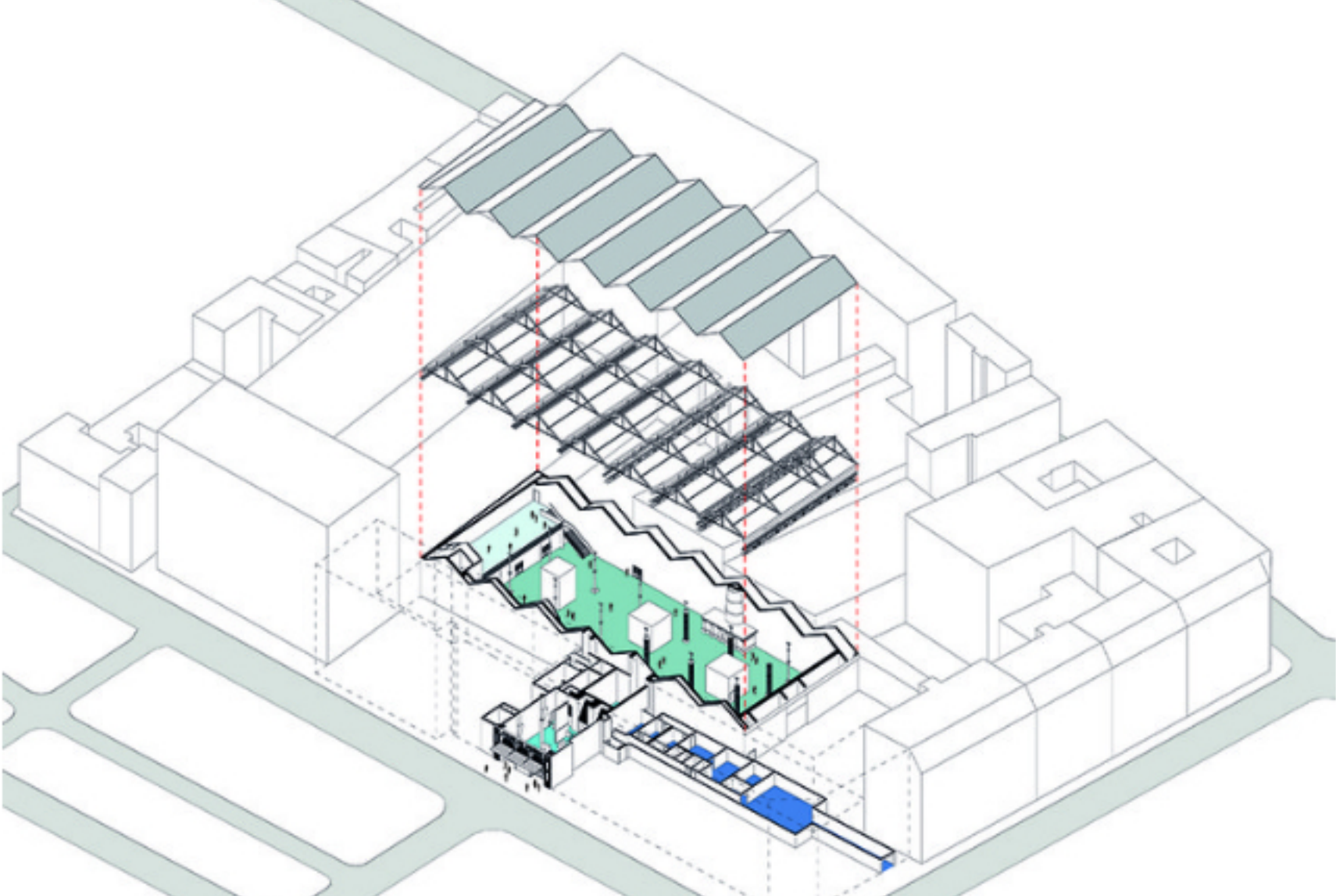
Client
Culturespaces

Manufacturers
A2A, CARE, Colt, ENGIE, Général Métal Edition, IDS, Les Charpentiers de Paris, Schneider

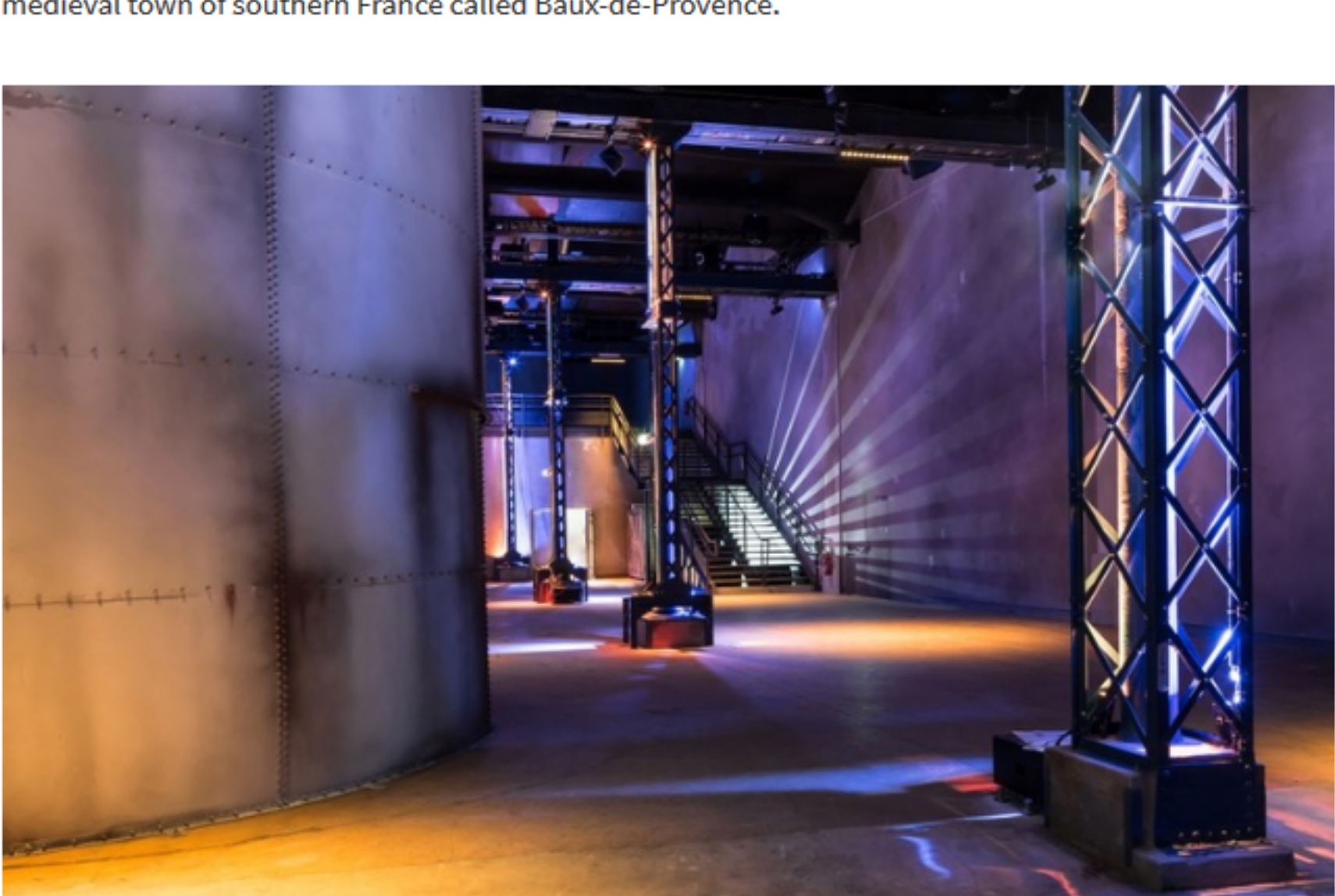
LESS SPECS



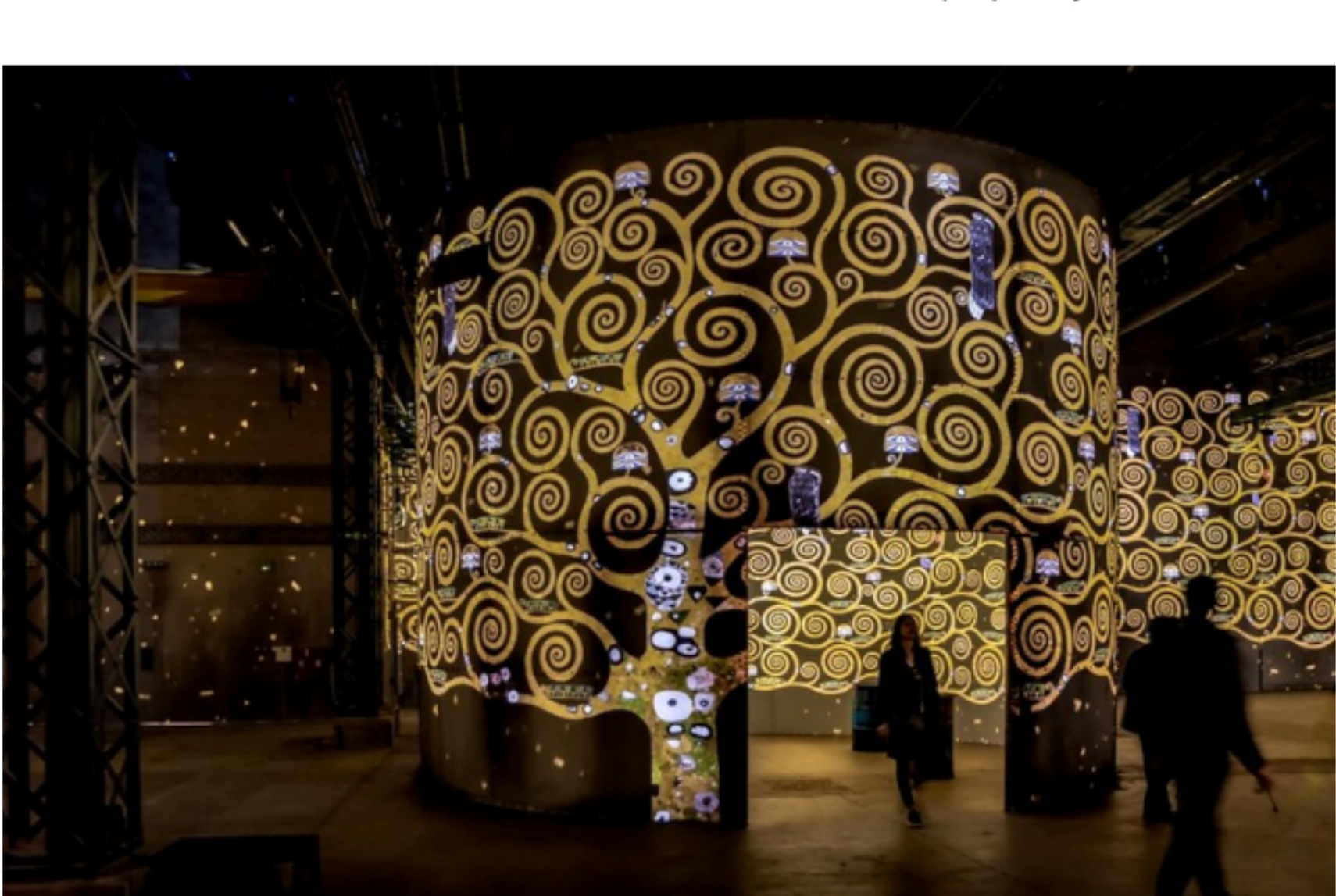
Text description provided by the architects. A breakthrough in cultural public facilities. L'Atelier des Lumières - The lights factory - is the first digital art center in Paris. This multimedia exhibit takes place in an industrial space offering a mesmerizing immersive experience into art and music.



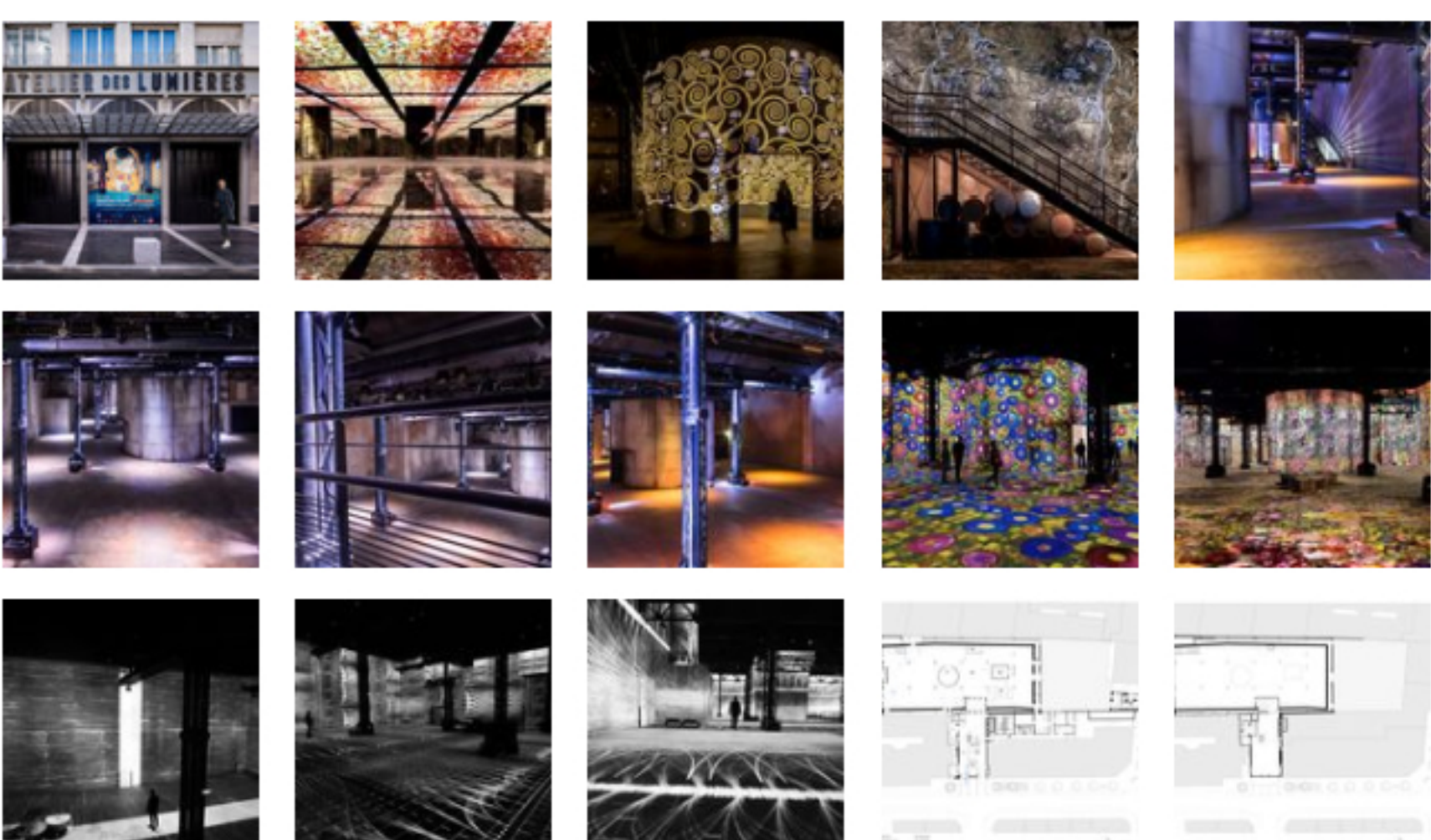
Thousands of digital photos are brought to life in unison with the rhythm of masterpieces of music inciting the audience to soar into a marvelous art journey. This patented process developed by the company "Culturespaces" is already facing a tremendous success at "Carrières des Lumières" in the medieval town of southern France called Baux-de-Provence.



The respect of the ancient foundry has been the pressing concern throughout the entire project to let the spirit of this industrial place blossom. The structure enlightens the industrial features of the vast hall, the core space of the project. The use of authentic materials and their perfect implementation reminds us the heritage of the nineteenth century while supporting the incredible complex technology (120 video projectors, premium quality speakers, acoustical insulation, enhancing sound systems all assembled into a 2000+ sqm hall with a 15m high ceiling). The architecture of the hall extends to the main facade "rue Saint-Maur" to make it visible from outside and attract people's eyes.



View the complete gallery



MOST VISITED

- Beijing Daxing International Airport / Zaha Hadid Architects
- 23 Buildings You Shouldn't Miss in Chicago
- Hongje Community Center / Simplex Architecture

MOST VISITED PRODUCTS

- 3D Rendering Software - Pro Student Version | Lumion
- AUTEM™ Acoustic Ceilings | FabriTRAK®
- Minimalist Window - Pivoting | Vitrocsa